

FORKLIFT TIRE REPLACEMENT GUIDE

Forklift do not have suspensions — so tires are alone responsible for softening the ride for the cargo and driver. Forklift tires traverse over rough terrain and can carry more than 9,500 pounds at one time. Tires must be properly maintained to make stopping, turning, reversing and accelerating safer and more efficient.

FORKLIFT TIRES KEEP YOUR OPERATIONS *MOVING*



Safety Wear Line

Some tires have a safety line built into the side of the tire - replace before tire wears to this line.



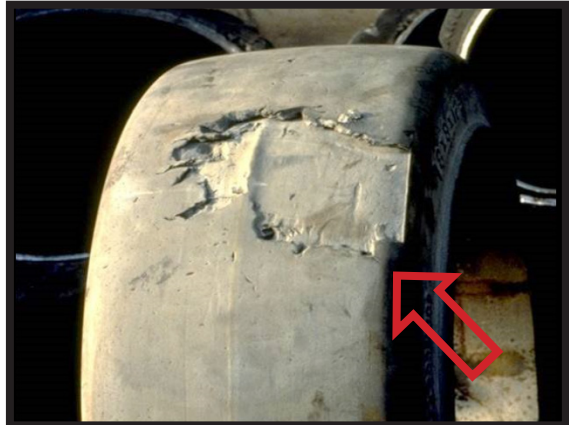
Flat-Spots

Tires can develop flat-spots during acceleration or stops with heavy loads causing trucks to shake when moving.



Cuts & Tears

Tears and cuts are caused by running over debris or sharp edges and makes the truck unstable for heavy loads.



Chunking

Driving over rough surfaces will make pieces of rubber fall off making the forklift rattle and unstable.

Seven Locations to Serve You

Omaha • Kansas City • Grand Island • Lincoln
Sioux City • Sioux Falls • West Fargo

RIEKES
EQUIPMENT

800.856.0931

RiekesEquipment.com